

TOSCA

PULL UP

32 BASIC AND FASHION COLOURS WITH A MILLED, LIGHT PULL-UP FINISH IN A SUBSTANCE OF 2.0 - 2.2 MM. A SPECIAL PROTECTIVE TOP COAT IMPROVES COLOUR FASTNESS AND MAKES THIS ARTICLE MORE RESISTANT TO WATER STAINS

Finish	Pull Up With Protective Coating
Type	Bovine
Size	Double Butts
Thickness	1.8 – 2.0sqm approximately
Country of origin	2.0/2.2mm approximately
Application	Netherlands
	Footwear, Saddlery, Strapping, Bags, Craft + Accessories

PLEASE NOTE: Intent colours are stocked in our overseas warehouse and brought in as requested. Please allow an additional 10 days for items to arrive.



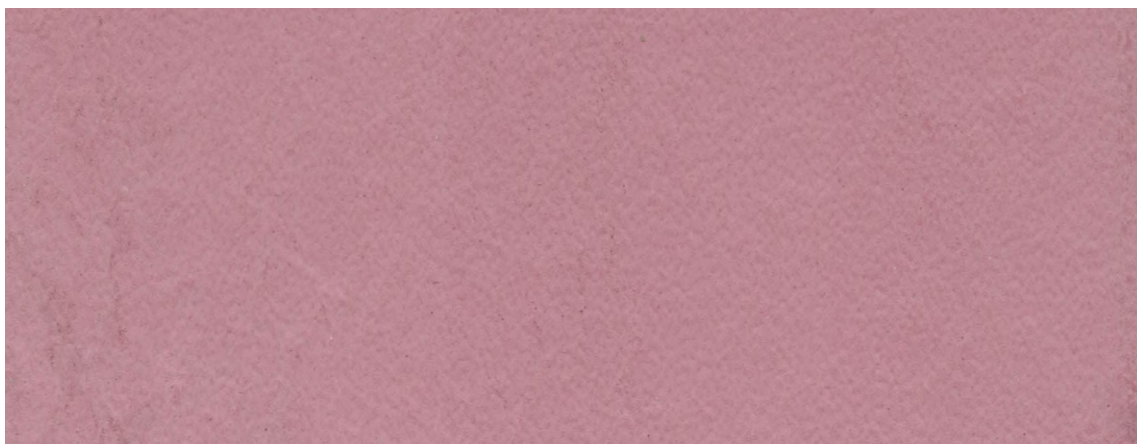
SADDLERY + STRAPPING



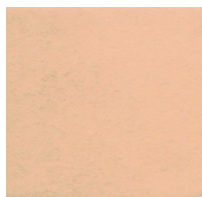
FOOTWEAR



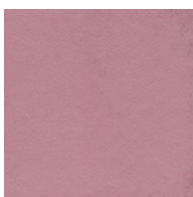
BAGS, CRAFT + ACCESSORIES



****please use images as guides, for true reference please request a sample or contact one of our reps today**.**



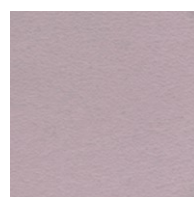
peach



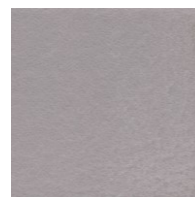
old pink



lavender



dawn



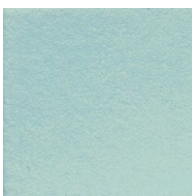
ash



cream



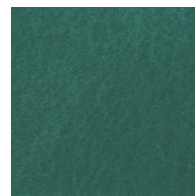
pistachio



aqua

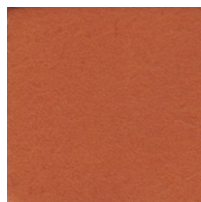


lead

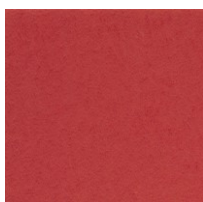


green

please use images as guides, for true reference please request a sample or contact one of our reps today.



orange



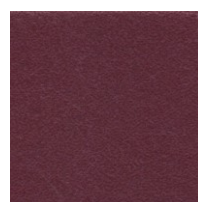
brick



red



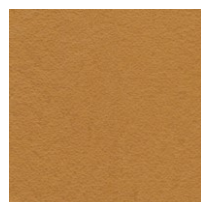
ruby



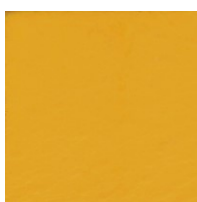
plum



fuchsia



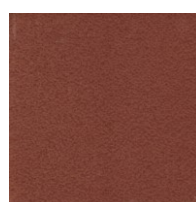
ochre



yellow



taupe



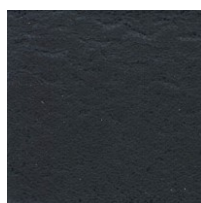
chestnut



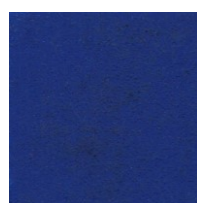
brown



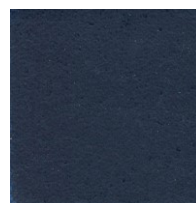
bordo



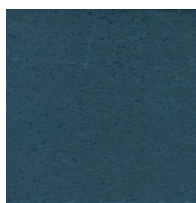
navy



cobalt



blue



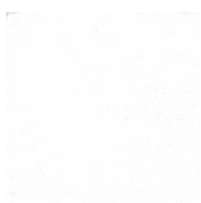
petrol



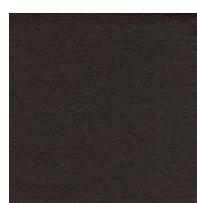
khaki



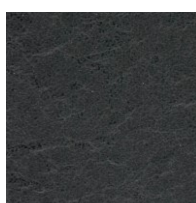
grey



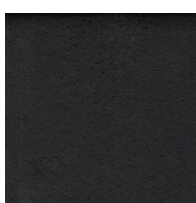
white



cacao



anthracite



black