

# RHODES

## VELOUR GRAIN



UPHOLSTERY

INTERNAL  
MARINE

### NSW

+61 450 885 232 - Michael

+61 412 334 102 - Greg

+61 425 375 566 - Claude

### VIC

+61 411 065 929 - Jana

+61 431 134 546 - Simone

### QLD

East Coast Leather

(07) 3206 4667 - Trevor

[www.eccolt.com.au](http://www.eccolt.com.au)
[www.leatheritalia.com.au](http://www.leatheritalia.com.au)

Building D

60-66 Perry Street

Matraville NSW 2036

RHODES is a luxurious Italian velour grain leather with a beautiful suede look with a soft and velvet touch that's has a warm and natural feel. Chrome tanned, aniline dyed finished with high quality oils. The possible presence of any imperfections testify the authenticity and the natural look of pure aniline leather.

### TECHNICAL SPECIFICATIONS:

Type	Nubuk - Velour Grain		
Size	5.0sqm approximately		
Thickness	1.2 - 1.4mm		
Country of origin	Italy		
Application	Commercial, Residential + Internal Marine		
Tear Strength, Single Edge Tear	UNI EN ISO 3377-1	> = 20	N
Colour Fastness to Rubbing	UNI EN ISO 11640:1998		
	Dry 50 Cycles	> = 3	Grey Scale
	UNI EN ISO 11640:1998		
Colour Fastness to artificial light	Wet 10 Cycles	> = 3	Grey Scale
	UNI EN ISO 11640		
	UNI EN ISO 105-B02 (MET.5)		
Flammability Tests	Expositions energy 16.000kj/m²	> = 2	Grey Scale
	BS 5852:1979	Pass	
	BS EN 1021-1-2 : 2006	Pass	

### CARE INSTRUCTIONS:

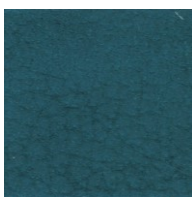
Protect from direct sunlight, excessive heat and sharp objects. Clean with a damp cloth and do not soak leather with excessive water. Take regular care of your leather by removing any dust with either a vacuum cleaner or damp cloth. Avoid chemical polishes and soap. Polish with a dry cloth.



\*\*please use images as guides, for true reference please request a sample or contact one of our reps today\*\*.



1701 caqui



1702 emerald



1703 true  
blue



1704 chocolate  
forest



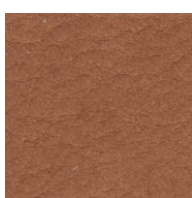
1705 chalk



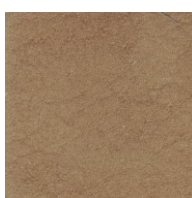
1706 concrete



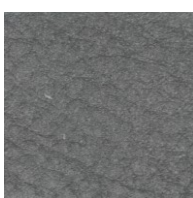
1707 duck bill



1708 cuoio



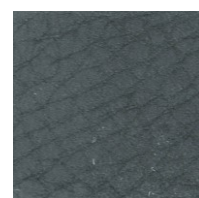
1709 caramel



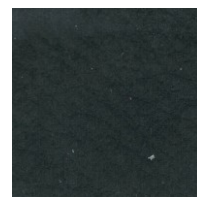
1710 plomo



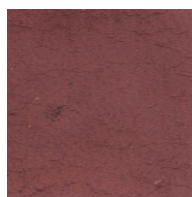
1711 cenere



1712 grafite



1713 ardesia



1714 lucky



1715 elefant



1716 doeskin



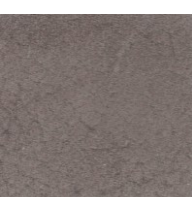
1717 dream



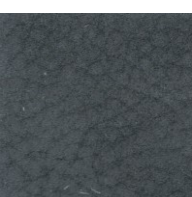
1718 nude



1719 kangaroo



1720 vison



1721 ematite