

# LEURA

## NATURAL GRAIN

**LEURA is a soft natural grain cow leather ideal for garments, bags and even upholstery. Our superior tannage makes the leather soft but has a good body and full touch.**

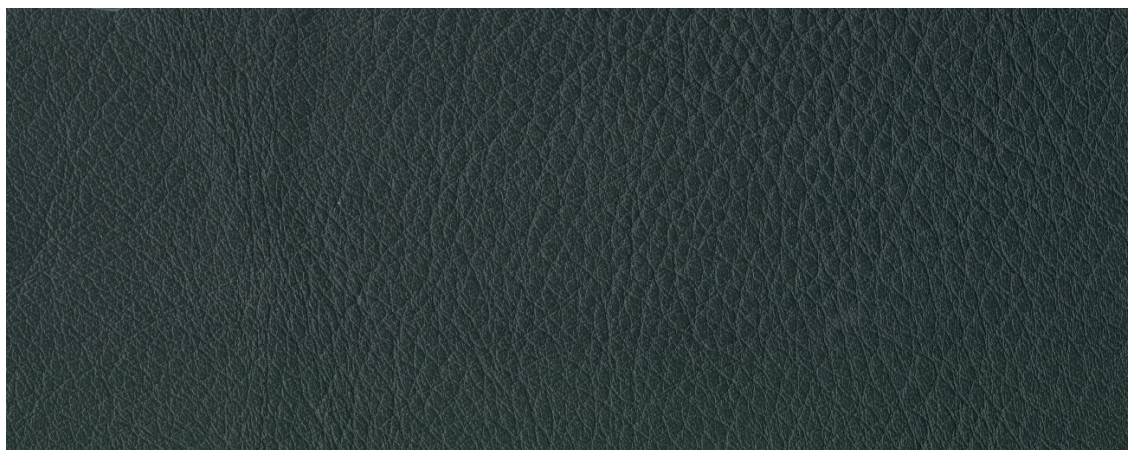
Finish	Natural Grain
Type	Cow
Size	Sides
	24 – 26 sqft approximately
Thickness	1.2 – 1.4 mm approximately
Country of origin	South Korea
Application	Footwear, Garment, Saddlery, Bag, Craft + Accessories



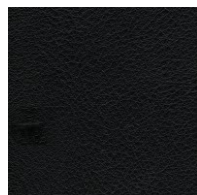
GARMENT

BAGS + CRAFT +  
ACCESSORIES

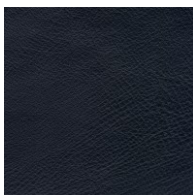
FOOTWEAR

SADDLERY +  
STRAPPING

**\*\*please use images as guides, for true reference please request a sample or contact one of our reps today\*\*.**



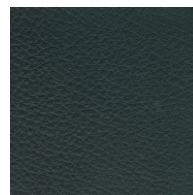
black



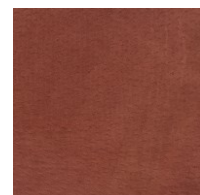
navy



grey



green



sienna